

COMMERCIAL BUILDING- RESTAURANT

ARCHITECT SEAL:

PROJECT SUMMARY

SCALE @ 24" X 36"

DATE: 10-16-2024

DRAWN BY: AK

GENERAL NOTES:

THIS PLAN SET, COMBINED WITH THE BUILDING CONTRACT, PROVIDES BUILDING DETAILS FOR THE COMMERCIAL PROJECT. THE CONTRACTOR SHALL VERIFY THAT SITE CONDITIONS ARE CONSISTENT WITH THESE PLANS BEFORE STARTING WORK. WORK NOT SPECIFICALLY DETAILED SHALL BE CONSTRUCTED TO THE SAME QUALITY AS SIMILAR WORK THAT IS DETAILED. ALL WORK SHALL BE DONE IN ACCORDANCE WITH INTERNATIONAL BUILDING CODES AND LOCAL CODES. CONTRACTOR SHALL BE RESPONSIBLE AND BEAR ANY FINES OR PENALTIES FOR CODE, ORDINANCE, REGULATION OR BUILDING PROCESS VIOLATIONS. INSURANCES SHALL BE IN FORCE THROUGHOUT THE DURATION OF THE BUILDING PROJECT.

WRITTEN DIMENSIONS AND SPECIFIC NOTES SHALL TAKE PRECEDENCE OVER SCALED DIMENSIONS AND GENERAL NOTES. THE ENGINEER/ DESIGNER SHALL BE CONSULTED FOR CLARIFICATION IF SITE CONDITIONS ARE ENCOUNTERED THAT ARE DIFFERENT THAN SHOWN, IF DISCREPANCIES ARE FOUND IN THE PLANS OR NOTES, OR IF A QUESTION ARISES OVER THE INTENT OF THE PLANS OR NOTES. CONTRACTOR SHALL VERIFY AND IS RESPONSIBLE FOR ALL DIMENSIONS (INCLUDING ROUGH OPENINGS). ALL TRADES SHALL MAINTAIN A CLEAN WORK SITE AT THE END OF EACH WORK DAY.

PLEASE SEE ADDITIONAL NOTES CALLED OUT ON OTHER SHEETS.

CODE INFORMATION:

PROJECT DESCRIPTION:

INTERIOR RENOVATION OF EXISTING RESTAURANT;
DOORS AND WINDOWS ARE REPAIRED AND CLEANED
CEILING TILES REPLACED AND FLOORING REDONE AND POLISHED
CONSTRUCTION OF HALF WALL AND PROPOSED NEW DOORS
REPLACED FRP THROUGHOUT THE RESTAURANT
DROP CEILING PROVIDED IN STORAGE WITH REFRIGERATION
EXISTING LIGHT FIXTURES REPLACED WITH LED LIGHTS

BUILDING CODE:

INTERNATIONAL BUILDING CODE - 2015

PROJECT SQUARE FOOTAGE:

EXISTING TO REMAIN

CHAPTER 3- CLASSIFICATION:

EXISTING : RESTAURANT - A-2 CLASSIFICATION
PROPOSED: RESTAURANT-A-2 CLASSIFICATION

CHAPTER 5- HEIGHT AND AREA:

EXISTING TO REMAIN

CHAPTER 6- CONSTRUCTION TYPE:

EXISTING TO REMAIN

CHAPTER 7- FIRE SEPARATION AND RATINGS:

EXISTING TO REMAIN

CHAPTER 8- INTERIOR FINISH RATINGS:

EXISTING TO REMAIN:

CHAPTER 9- FIRE PROTECTION:

EXISTING TO REMAIN

CHAPTER 9- FIRE AND SMOKE ALARMS:

EXISTING TO REMAIN

CHAPTER 10- MEANS OF EGRESS:

EXISTING TO REMAIN

OCCUPANCY LOAD AND EGRESS:

OCCUPANCY CALCULATION:

KITCHEN - 622.11 SQ.FT = 7 OCCUPANTS
LOBBY - 445.21 SQ.FT = 5 OCCUPANTS
PREP AREA - 392.76 SQ.FT = 4 OCCUPANTS
FREEZER - 278.48 SQ.FT = 3 OCCUPANTS
OFFICE - 45.18 SQ.FT = 1 OCCUPANTS
DINING - 26+32 = 58 OCCUPANTS

TOTAL OCCUPANTS= 78 OCCUPANTS

OWNER: [REDACTED]
PROJECT: INTERIOR RENOVATION OF EXISTING RESTAURANT
ADDRESS: [REDACTED]

WATER/SEWER :PUBLIC
BUILDING PERMIT :MICHIGAN
PARCEL ID :01001042
COUNTY :WAYNE
OCCUPANCY CLASSIFICATION : A-2 ASSEMBLY
ZONING : NMX
CONSTRUCTION TYPE : V-B
PROPERTY TYPE : RETAIL
PROPERTY SUBTYPE : RESTAURANT
LOT AREA :103968 SQ.FT

ARCHITECT NAME : ASWIN KUMAR
ARCHITECT CONTACT : +1 302-889-1886

INDEX

Label	Title
G01	PROJECT SUMMARY
G02	GENERAL NOTES
A01	PROPOSED FLOOR PLAN
A02	EQUIPMENT SCHEDULE
A02	LIFE SAFETY PLAN
A03	CEILING PLAN
P01	PLUMBING NOTES
P02	PLUMBING PLAN
P03	SEWER PLAN
D01	EQUIPMENTS SEPECIFICATION
D02	EQUIPMENTS SEPECIFICATION
D03	EQUIPMENTS SEPECIFICATION



RENDERING
FOR ILLUSTRATION ONLY

BUILDING DESIGN AND CODE DATA:

NOTE: THIS WAS A PURPOSE DRAWING Branch Circuitry and Panel designations to be designed and installed by certified local electrician. L.S. (NFPA 101 LIFE SAFETY CODE) AS APPLICABLE.

APPLICABLE BUILDING CODES:

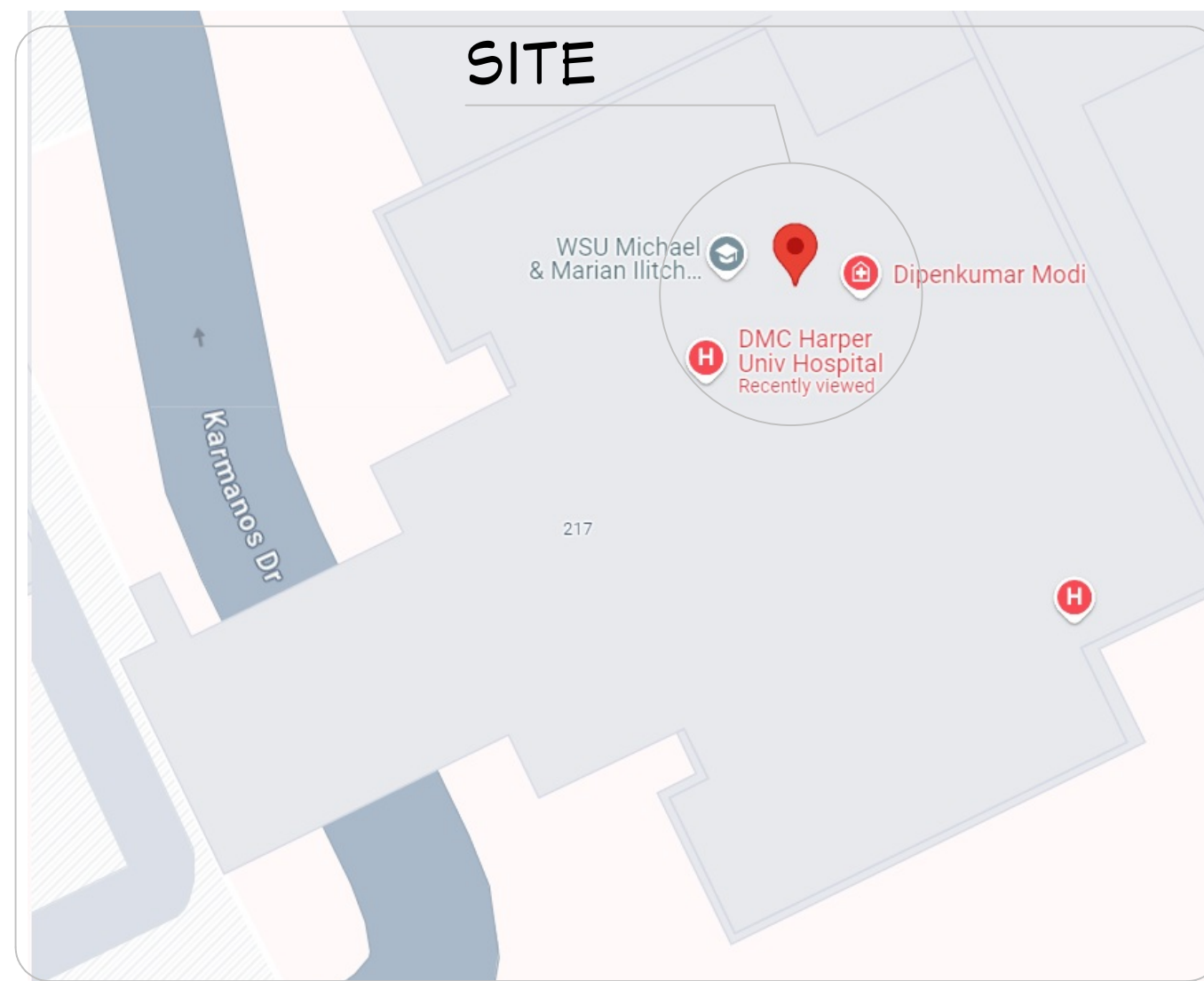
- INTERNATIONAL BUILDING CODE 2015
- INTERNATIONAL RESIDENTIAL CODE 2015
- INTERNATIONAL PLUMBING CODE 2015
- INTERNATIONAL MECHANICAL CODE 2015
- NATIONAL ELECTRIC CODE 2020

CONSTRUCTION TYPE: (BASED ON CHAPTER 5 OF THE IBC)

CONSTRUCTION TYPE: V-B
FIRE RATINGS FOR BUILDING ELEMENTS (BASED ON SECTION 602.1 & TABLES 601 & 602 OF THE IBC):

FIRE PROTECTION SYSTEMS SUMMARY:

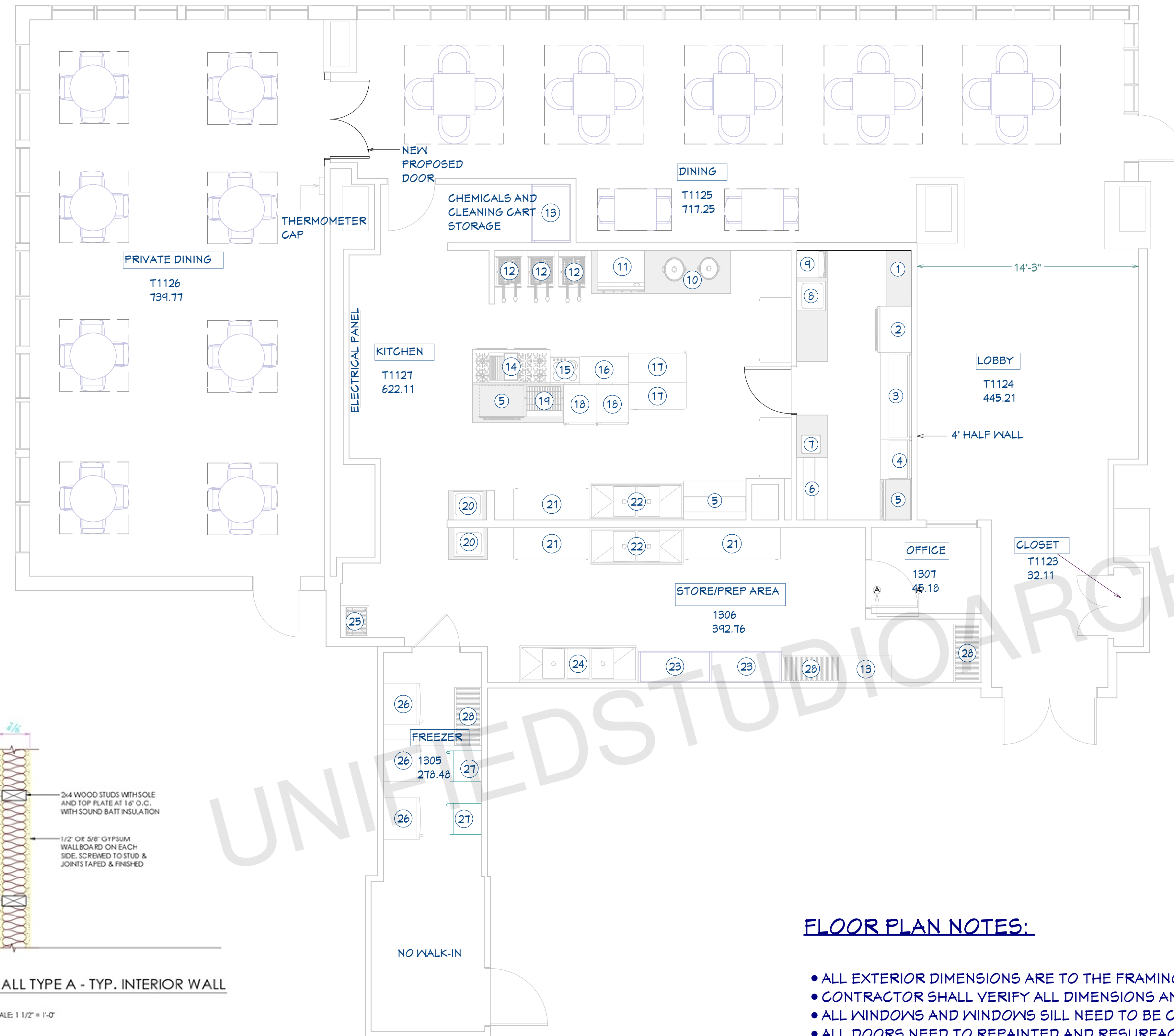
AN AUTOMATIC FIRE SPRINKLER SYSTEM AS DESCRIBED PER IBC SECTION 903 IS NOT REQUIRED.
LESS THAN 5000 SQ.FT, SO SPRINKLER SYSTEM NOT REQUIRED.



8735 Dunwoody Place
#6694, Atlanta, GA 30350
unifiedstudioarchitect.com
Ph: 302 889 1886

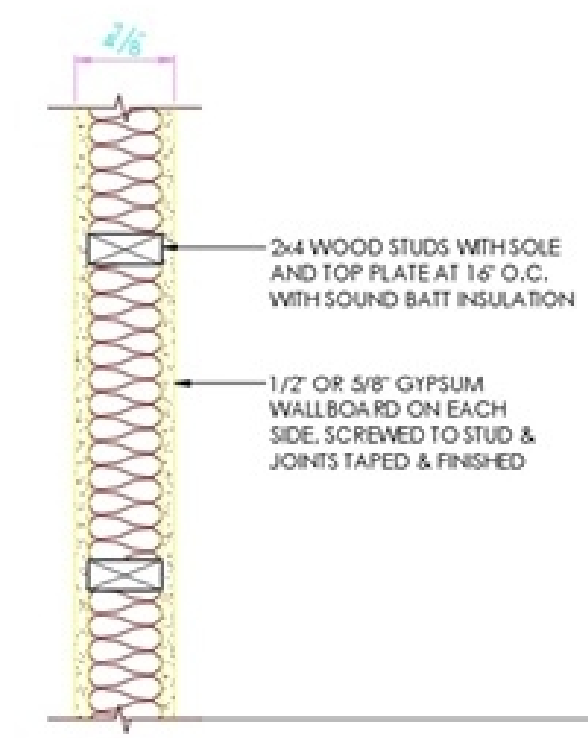
SHEET NUMBER

G01



① CASH REGISTER	①⑦ REFRIGERATOR WORKTOP
② REFRIGERATOR MERCHANDISER	①⑧ HOT HOLD CABINET
③ STEAM TABLE	①⑨ GRILLER
④ STEAM TABLE	②① HAND SINK
⑤ OVEN	②② PREP TABLE
⑥ SANDWICH COOLER	②③ TWO COMPARTMENT SINK
⑦ DROP-IN SINK	②④ DISH STORAGE
⑧ HAND SINK	②⑤ THREE COMPARTMENT SINK
⑨ POP MACHINE	②⑥ SLOPE SINK
⑩ STOCK POT RANGE	②⑦ FREEZER
⑪ GRIDDLE	②⑧ COOLER
⑫ FRYER	②⑨ SHELVING
⑬ DRY STORAGE	
⑭ RANGE	
⑮ HOT PLATE	
⑯ FREEZER WORKTOP	

EQUIPMENT & FIXTURES LIST
1/4"=1'



WALL TYPE A - TYP. INTERIOR WALL
SCALE: 1 1/2" = 1'-0"

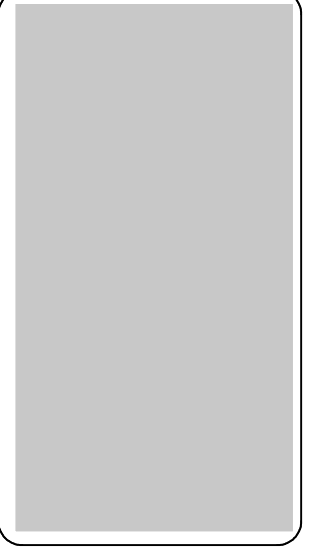
FLOOR PLAN
1/4"=1'

	EXISTING
	PROPOSED

FLOOR PLAN NOTES:

- ALL EXTERIOR DIMENSIONS ARE TO THE FRAMING OR MAIN LAYER.
- CONTRACTOR SHALL VERIFY ALL DIMENSIONS AND IS RESPONSIBLE FOR ALL DIMENSIONS (INCLUDING ROUGH OPENINGS).
- ALL WINDOWS AND WINDOWS SILL NEED TO BE CLEANED AND REPAIRED
- ALL DOORS NEED TO BE REPAINTED AND RESURFACED
- LOCK WITH DIGITAL CODE NEED TO BE PROVIDED FOR ALL THE EMPLOYEE ACCESS DOORS
- ALL THE FLOORS NEED TO BE CLEANED, RE-CONDITIONED AND POLISHED WITH PORCELAIN MATERIAL
- ALL THE LIGHT FIXTURES NEED TO BE REPLACED WITH LED LIGHTS
- WALLS NEED TO BE RESURFACED AND PAINTED AND FILING TILES NEED TO BE DONE
- STORAGE WITH REFRIGERATION BACKWALL NEED TO BE STUDDED AND BUILT UP
- POWER SUPPLY NEED TO BE GIVEN IN STORAGE AREA WITH REFRIGERATION
- SEPARATE RECEPTACLES TO BE GIVEN FOR REFRIGERATION
- ALL THE FRP NEED TO BE REPLACED
- CLEAN AND SEAL THE SLOPE SINK
- CABINETS IN THE OFFICE WALL NEED TO BE REPLACED WITH NEW CABINETS
- CLOSET NEED TO BE PROVIDED WITH COATED KEY LOCK AND TO BE CLEANED AND RESURFACED
- WHITE PANELING IN KITCHEN AREA NEED TO BE REPLACED WITH MODERN PANELING
- PANELING ABOVE BOOTH WILL HAVE DIGITAL MENU BOARD AND TV
- ALL STAINLESS STEEL OF HOOD SYSTEM NEED TO BE REPLACED
- GAS LINES NEED TO BE EXTENDED WHEREVER NECESSARY

ARCHITECT SEAL:

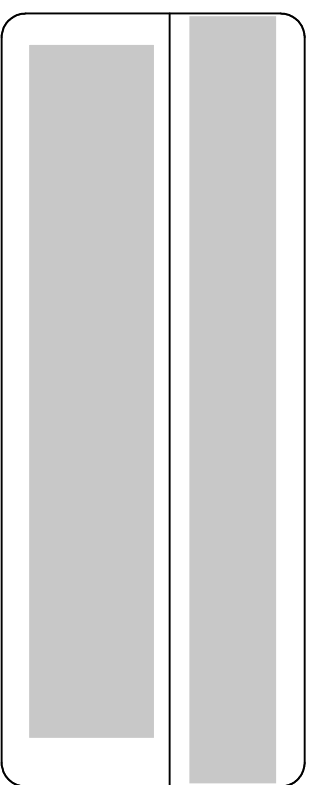


FLOOR PLAN

SCALE @ 24" X 36"

DATE: 10-16-2024

DRAWN BY: AK



8735 Dunwoody Place
#6694, Atlanta, GA 30350
unifiedstudioarchitect.com
Ph: 302 889 1886

SHEET NUMBER

A02

2	REFRIGERATOR MERCHANDISER	W=29"; D=32"; H=82.5"	BERG'S SOLID DOOR REACH-IN REFRIGERATORS ARE CONSTRUCTED OF A HEAVY DUTY STAINLESS STEEL EXTERIOR MAKING THEM STRONG AND DURABLE ENOUGH TO SURVIVE ANY KITCHEN ENVIRONMENT. THE COOLING UNITS ARE BOTTOM MOUNTED AND SLIDE OUT FOR EASY MAINTENANCE AND CLEANING. ALL MODELS COME WITH 4" CASTERS AND PLASTIC COATED WIRE SHELVING THAT IS EASILY REMOVABLE TO ADJUST THE SHELF HEIGHT. THE FRONT DIGITAL CONTROLLERS AND LED READOUT MAKES IT EASY TO ADJUST THE INTERIOR TEMPERATURE. THESE MODELS ARE ETL LISTED AND ETL SANITATION. THEY ARE BACKED WITH A 2 YEAR WARRANTY ON PARTS AND LABOR AND A 5 YEAR WARRANTY ON THE COMPRESSOR. • STAINLESS STEEL BODY • STAINLESS STEEL UNDER SHELF AND LEGS • INSULATED ON ALL FOUR SIDES AND BOTTOM • STANDING PILOT LIGHT DESIGN PROVIDES A READY FLAME WHEN HEAT IS REQUIRED • 1/2" NPT GAS CONNECTION	BERG	BRF-1D / BRF-2D
3	STEAM TABLE	W=72.5"; D=29.9"; H=33"	• STAINLESS STEEL BODY • STAINLESS STEEL UNDER SHELF AND LEGS • INSULATED ON ALL FOUR SIDES AND BOTTOM • STANDING PILOT LIGHT DESIGN PROVIDES A READY FLAME WHEN HEAT IS REQUIRED • 1/2" NPT GAS CONNECTION	SENTINEL	SN-GBM-3NG/LP
4	STEAM TABLE	W=30.4"; D=12.9"; H=33"	• STAINLESS STEEL BODY • STAINLESS STEEL UNDER SHELF AND LEGS • INSULATED ON ALL FOUR SIDES AND BOTTOM • STANDING PILOT LIGHT DESIGN PROVIDES A READY FLAME WHEN HEAT IS REQUIRED • 1/2" NPT GAS CONNECTION	SENTINEL	SN-GBM-3NG/LP
5	OVEN	W=26"; D=26.5"; D=36"	35,000 BTU SPACE SAVER OVEN WITH SNAP ACTION THERMOSTAT ADJUSTABLE FOR 1750F TO 5500F. U-SHAPED HEAVY DUTY OVEN BURNER. EQUIPPED WITH FLAME FAILURE SAFETY DEVICE. LARGE 26" WIDE X 26-1/2" DEEP OVEN WITH ALL OVEN CAVITY PARTS ENAMELED. FOUR SIDES AND TOP OF OVEN INSULATED WITH HEAVY, SELF-SUPPORTING BLOCK TYPE ROCK WOOL WITH OVEN BAFFLE ASSEMBLY. 1/2 HP, 1710 RPM, 60 CYCLE, 115V AC HIGH EFFICIENCY, PERMANENT SPLIT PHASE MOTOR. ON/OFF SWITCH TO ALLOW CO BASE TO OPERATE AS A STANDARD OVEN. 5-POSITION RACK GUIDES WITH TWO (2) REMOVABLE RACKS. • STAINLESS STEEL EXTERIOR & INTERIOR • REAR MOUNT COMPRESSOR WITH ENVIRONMENTALLY FRIENDLY R290 REFRIGERANT • DIXELL DIGITAL CONTROLLER • MAINTAINS TEMPERATURES BETWEEN 33° F - 40° F • PRE-INSTALLED 1/6 SIZE FOOD PANS • 1" CUTTING BOARD • RECESSED DOOR HANDLE(S) • SELF-CLOSING DOOR(S) WITH STAY OPEN FEATURE • MAGNETIC DOOR GASKET(S) STANDARD FOR POSITIVE DOOR SEAL • ONE (1) PRE-INSTALLED SHELF PER SECTION • PRE-INSTALLED CASTERS • 17" X 15" WALL MOUNTED HAND SINK • BOWL: 14" X 10" X 5" DEEP • 6" BACKSPLASH WITH A 2" RETURN • 1" FAUCET HOLES 4" ON CENTER • 6" HIGH SPLASH GUARDS • 1-1/2" DRAIN OPENING • INCLUDES FAUCET, BASKET STRAINER AND WALL MOUNT BRACKET • NSF APPROVED	SOUTHBEND	S36A
6	SANDWICH COOLER	W=60"; D=22"; H=51"	• STAINLESS STEEL EXTERIOR & INTERIOR • REAR MOUNT COMPRESSOR WITH ENVIRONMENTALLY FRIENDLY R290 REFRIGERANT • DIXELL DIGITAL CONTROLLER • MAINTAINS TEMPERATURES BETWEEN 33° F - 40° F • PRE-INSTALLED 1/6 SIZE FOOD PANS • 1" CUTTING BOARD • RECESSED DOOR HANDLE(S) • SELF-CLOSING DOOR(S) WITH STAY OPEN FEATURE • MAGNETIC DOOR GASKET(S) STANDARD FOR POSITIVE DOOR SEAL • ONE (1) PRE-INSTALLED SHELF PER SECTION • PRE-INSTALLED CASTERS • 17" X 15" WALL MOUNTED HAND SINK • BOWL: 14" X 10" X 5" DEEP • 6" BACKSPLASH WITH A 2" RETURN • 1" FAUCET HOLES 4" ON CENTER • 6" HIGH SPLASH GUARDS • 1-1/2" DRAIN OPENING • INCLUDES FAUCET, BASKET STRAINER AND WALL MOUNT BRACKET • NSF APPROVED	BERG	BERM32T
7	DROP IN SINK	W=14"; B=19"; D=10"	• 17" X 15" WALL MOUNTED HAND SINK • BOWL: 14" X 10" X 5" DEEP • 6" BACKSPLASH WITH A 2" RETURN • 1" FAUCET HOLES 4" ON CENTER • 6" HIGH SPLASH GUARDS • 1-1/2" DRAIN OPENING • INCLUDES FAUCET, BASKET STRAINER AND WALL MOUNT BRACKET • NSF APPROVED	SAUBER	FA0018
8	HAND SINK	W=14"; B=10"; D=5"	GENERAL NOTES		
9	POP MACHINE	W=34"; D=33"; H=72"	GENERAL NOTES		
11	GRIDDLE	W=27.5"; D=33.5"; H=19.5"	ADJUSTABLE THERMOSTAT FROM 200° - 450°F FOR PRECISE CONTROL WHILE COOKING • STAINLESS STEEL FRONT, SIDES AND SPLASH GUARDS THAT ARE FULLY WELDED FOR EXTRA DURABILITY • GRIDDLE PLATE IS MADE UP OF 1" THICK POLISHED STEEL • ONE "U" SHAPED STAINLESS STEEL BURNER FOR EVERY 12" GRIDDLE WIDTH • 30,000 BTU/HR PER BURNER • SEPARATE GAS VALVES FOR EACH BURNER WITH STANDING PILOT IGNITION SYSTEM • 3" WIDE GREASE TROUGH FOR EASY CLEANING • 4-5 1/2" ADJUSTABLE HEAVY DUTY STEEL LEGS • 3/4" REAR NPT GAS INLET • REMOVABLE STEEL DRIP TRAY FOR EASY CLEANING • FIELD CONVERTIBLE TO LPG - L.P. ORIFICES INCLUDED	PATRIOT	PT-G24-T
12	FRYER	W=14"; B=13.8"; H=45.6"	• WELDED 16 GAUGE STAINLESS STEEL TANK FINISH ENSURES EASY CLEANING • LONG LASTING BAFFLES ARE MOUNTED IN THE HEAT EXCHANGE TUBES TO PROVIDE MAXIMUM HEATING AND COMBUSTION EFFICIENCY • STANDING PILOT LIGHT DESIGN PROVIDES A READY FLAME WHEN HEAT IS REQUIRED • CABINET IS CONSTRUCTED OF STAINLESS STEEL FRONT AND DOOR WITH GALVANIZED SIDES AND BACK • THE FRYER COMES WITH 3/4" NPT MALE CONNECTOR ON A 1/2" PIPE, ALLOWING YOU TO CONNECT WITH EITHER 3/4" OR 1/2" NPT FEMALE CONNECTOR	PATRIOT	PT-F5
14	RANGE	W=30"; D=29"; H=36"	GENERAL NOTES		
15	HOT PLATE	W=12"; B=18"	GENERAL NOTES		
16	FREEZER WORKTOP	W=27.5"; D=30"; H=39"	0 STAINLESS STEEL EXTERIOR & INTERIOR WITH REINFORCED STAINLESS STEEL TOP WITH FOAMED IN PLACE BACKSPLASH 0 ENVIRONMENTALLY FRIENDLY R290 REFRIGERANT 0 ELECTRONIC TEMPERATURE CONTROLLER 0 MAINTAINS TEMPERATURES BETWEEN 8° F - 0° F 0 RECESSED DOOR HANDLE(S) 0 SELF-CLOSING DOOR(S) WITH STAY OPEN FEATURE 0 MAGNETIC DOOR GASKET(S) STANDARD FOR POSITIVE DOOR SEAL 0 PRE-INSTALLED CASTERS 0 ONE (1) PRE-INSTALLED SHELF PER SECTION	BERG	BERWT48F
17	REFRIGERATOR WORKTOP	W=27.5"; D=30"; H=39"	GENERAL NOTES		
18	HOT HOLD CABINET	W=25 3/4"; D=33.5"; H= 69 3/4"	• FULLY INSULATED HOLDING CABINET KEEPS PREPARED FOODS AT SERVING TEMPERATURES. • POWERFUL, YET EFFICIENT, 1500 WATT HEATING SYSTEM MAINTAINS THE RIGHT TEMPERATURE TO PROPERLY HOLD PRODUCTS. HEATS UP TO 200° F (93° C). • INTERNAL FRAME IN BODY MAINTAINS STRUCTURAL RIGIDITY. • BODY CONSTRUCTED OF NON-CORROSIVE, HI-TENSILE ALUMINUM FOR STRENGTH AND EASE OF MOBILITY. EXTENDED BASE PROTECTS CABINET BODY. • INSULATED DUTCH DOORS PREVENT TEMPERATURE LOSS; DOOR GASKETS FOR PROPER SEAL. FIELD REVERSIBLE FOR FLEXIBILITY.	CRESCOR	H-135-UA-11-R
19	GRILL	W=30"; B=36"; H=48"	GENERAL NOTES		
21	PREP TABLE	W=24"; B=18"; H=34"	GENERAL NOTES		

22	TWO COMPARTMENT SINK	W=68"; D=25.5"; H=43 3/4"	GENERAL NOTES		
23	DISH STORAGE	W=31"; B=30"	GENERAL NOTES		
24	THREE COMPARTMENT SINK	W=84"; D=25.5"; H=43 3/4"	• THREE COMPARTMENT SINK WITH TWO 18" DRAIN BOARDS AND 14" DEEP BOWLS • 84" X 25-1/2" D X 43-3/4" H • 10-3/8" BACKSPLASH • GALVANIZED LEGS WITH ADJUSTABLE FEET • 1-1/8" FAUCET HOLES 8" ON CENTER • INCLUDES THREE 3-1/2" BASKET STRAINERS • WELDED CONSTRUCTION FOR CONSISTENT METAL GAUGE THICKNESS THROUGHOUT • 16" X 20" X 14" DEEP BOWLS WITH 3/4" COVED RADIUS TUB CORNERS • RAISED 1-1/2" DIAMETER ROLLED EDGE • NSF APPROVED	SAUBER	FA0016
25	SLOPE SINK	W=23"; B=22"; H=36"	GENERAL NOTES		
26	FREEZER	W=29"; B=32"; H=82.5"	BERG'S SOLID DOOR REACH-IN FREEZERS ARE CONSTRUCTED OF A HEAVY DUTY STAINLESS STEEL EXTERIOR MAKING THEM STRONG AND DURABLE ENOUGH TO SURVIVE ANY KITCHEN ENVIRONMENT. THE COOLING UNITS ARE BOTTOM MOUNTED AND SLIDE OUT FOR EASY MAINTENANCE AND CLEANING. ALL MODELS COME WITH 4" CASTERS AND PLASTIC COATED WIRE SHELVING THAT IS EASILY REMOVABLE TO ADJUST THE SHELF HEIGHT. THE FRONT DIGITAL CONTROLLERS AND LED READOUT MAKES IT EASY TO ADJUST THE INTERIOR TEMPERATURE. THESE MODELS ARE ETL LISTED AND ETL SANITATION. THEY ARE BACKED WITH A 2 YEAR WARRANTY ON PARTS AND LABOR AND A 5 YEAR WARRANTY ON THE COMPRESSOR.	BERG	BFZ-2D
17	REFRIGERATOR WORKTOP		0 STAINLESS STEEL EXTERIOR & INTERIOR WITH REINFORCED STAINLESS STEEL TOP WITH FOAMED IN PLACE BACKSPLASH 0 ENVIRONMENTALLY FRIENDLY R290 REFRIGERANT 0 ELECTRONIC TEMPERATURE CONTROLLER 0 MAINTAINS TEMPERATURES BETWEEN 8° F - 0° F 0 RECESSED DOOR HANDLE(S) 0 SELF-CLOSING DOOR(S) WITH STAY OPEN FEATURE 0 MAGNETIC DOOR GASKET(S) STANDARD FOR POSITIVE DOOR SEAL 0 PRE-INSTALLED CASTERS 0 ONE (1) PRE-INSTALLED SHELF PER SECTION • 17" X 15" WALL MOUNTED HAND SINK • BOWL: 14" X 10" X 5" DEEP • 6" BACKSPLASH WITH A 2" RETURN • 1" FAUCET HOLES 4" ON CENTER • 6" HIGH SPLASH GUARDS • 1-1/2" DRAIN OPENING • INCLUDES FAUCET, BASKET STRAINER AND WALL MOUNT BRACKET • NSF APPROVED	BERG	BERWT60R
20	HAND SINK	W=14"; B=10"; D=5"	• 17" X 15" WALL MOUNTED HAND SINK • BOWL: 14" X 10" X 5" DEEP • 6" BACKSPLASH WITH A 2" RETURN • 1" FAUCET HOLES 4" ON CENTER • 6" HIGH SPLASH GUARDS • 1-1/2" DRAIN OPENING • INCLUDES FAUCET, BASKET STRAINER AND WALL MOUNT BRACKET • NSF APPROVED	SAUBER	FA0018
22	TWO COMPARTMENT SINK		• TWO COMPARTMENT SINK WITH TWO 18" DRAIN BOARDS • 68" X 25-1/2" D X 43-3/4" H • 10-3/8" BACKSPLASH • GALVANIZED LEGS WITH ADJUSTABLE FEET • 1-1/8" FAUCET HOLES 8" ON CENTER • INCLUDES TWO 3-1/2" BASKET STRAINER • WELDED CONSTRUCTION FOR CONSISTENT METAL GAUGE THICKNESS THROUGHOUT • 16" X 20" X 12" DEEP BOWLS WITH 3/4" COVED RADIUS TUB CORNERS • RAISED 1-1/2" DIAMETER ROLLED EDGE • NSF APPROVED	SAUBER	FA0012
27	COOLER	W=27.52"; D=22.05"; H=33.07"	• STEEL EXTERIOR WITH A DURABLE WHITE POWDER COATING • EMBOSSED ALUMINUM INTERIOR CABINET AND LID • MANUAL TEMPERATURE CONTROLLER WITH LIGHT UP INDICATORS • HINGED LID OPENS 90° FOR EASY ACCESS TO STORED ITEMS • ADJUSTABLE FEET	BERG	BD-15T
28	SHELVING	W=14"; L=24"; H=72"	GENERAL NOTES	SURESHELF	

EQUIPMENT SCHEDULE
1/4"=1'

ARCHITECT SEAL:

EQUIPMENT SCHEDULE

SCALE @ 24" X 36"

DATE: 10-16-2024

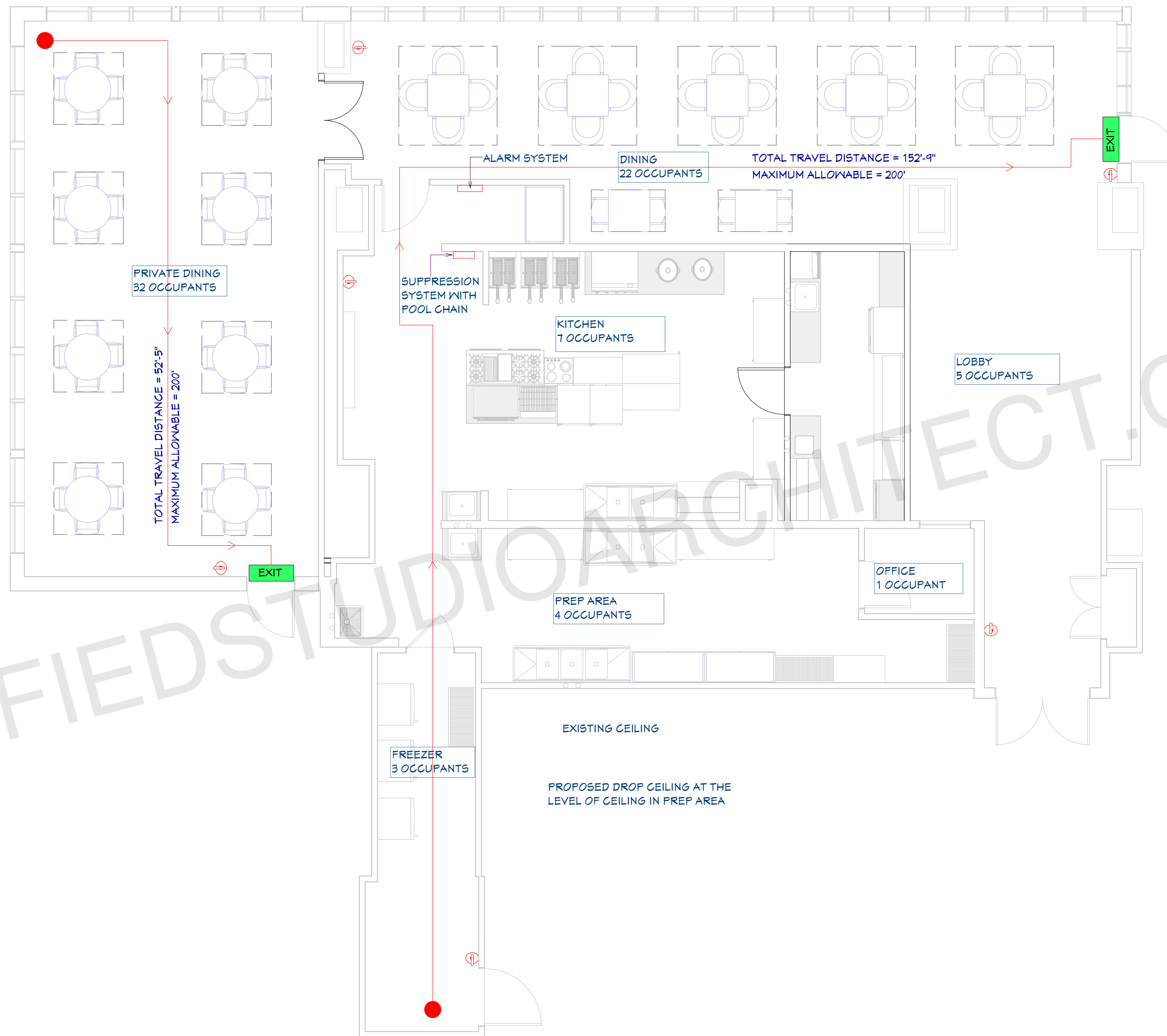
DRAWN BY: AK

8735 Dunwoody Place
#6694, Atlanta, GA 30350
unifiedstudioarchitect.com
Ph: 302 889 1886



SHEET NUMBER

A03



LIFE SAFETY PLAN

1/4"=1'

OCCUPANCY CALCULATION:

KITCHEN	- 622.11 SQ. FT = 7 OCCUPANTS
LOBBY	- 445.21 SQ. FT = 5 OCCUPANTS
PREP AREA	- 392.76 SQ. FT = 4 OCCUPANTS
FREEZER	- 278.48 SQ. FT = 3 OCCUPANTS
OFFICE	- 45.18 SQ. FT = 1 OCCUPANTS
DINING	- 22x32 = 54 OCCUPANTS
TOTAL OCCUPANTS	= 74 OCCUPANTS

LEGEND:

	EXIT SIGN
	FIRE EXTINGUISHER
	EMERGENCY LIGHT
	EGRESS PATH

EGRESS PATH:
 MAXIMUM ALLOWABLE DISTANCE FOR TYPE A-2 CLASSIFICATION = 200'

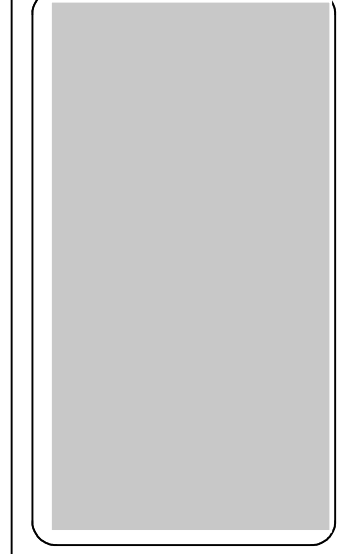
EGRESS WIDTH:
 OCCUPANCY TYPE A-2 CLASSIFICATION (150 SQ. FT/ PERSON)

$3668.5/150 = 24.4$
 $= 24.4 \times 0.2$
 $= 4.8"$
 $= 36" PROVIDED$

- EGRESS AND FIRE NOTES**
1. FIRE EXTINGUISHER CABINET (FEC) SHALL BE WALL BE EITHER CABINET TYPE OR WALL HUNG. RATED CABINETS TO MATCH CLASS OF REQUIRED EXTINGUISHER.
 2. APPROVED BUILDING NUMBER AND ADDRESS SHALL BE PLACED IN SUCH A POSITION AS TO BE PLAINLY VISIBLE AND LEGIBLE FROM THE STREET OR ROAD FRONTING THE PROPERTY. SAID NUMBERS SHALL CONTRAST WITH THEIR BACKGROUND.
 3. AT ANY TIME THE BUILDING IS OCCUPIED, THE MEANS OF EGRESS SHALL BE ILLUMINATED AT AN INTENSITY OF NOT LESS THAN 1 FOOT-CANDLE AT FLOOR LEVEL. IN THE EVENT OF POWER SUPPLY FAILURE, AN EMERGENCY ELECTRICAL SYSTEM SHALL AUTOMATICALLY ILLUMINATE ALL EGRESS COMPONENTS INCLUDING AISLES, EGRESS STAIRWAYS, AND CORRIDORS FOR NOT LESS THAN 90 MINUTES AND SHALL BE EQUIPPED WITH STORAGE BATTERIES.
 4. EXIT DOORS SHALL BE OPERABLE FROM THE INSIDE WITHOUT THE USE OF A KEY OR ANY SPECIAL KNOWLEDGE OR EFFORT.
 5. PROVIDE TACTILE EXIT SIGNS AT EXIT DOORS
 6. DEVICE LOCATIONS ARE DIAGRAMMATIC - REFER TO EGRESS PLANS FOR LAYOUT LOCATIONS AND EXIT ACCESS TRAVEL DISTANCES.
 7. EXIT SIGNS - MOUNTED AT STOREFRONT SYSTEMS - MOUNT TO FRAME AT DOOR HEAD
 8. CONTRACTOR SHALL PROVIDE TACTILE SIGNS AT LOCATIONS REQUIRED BY ADA

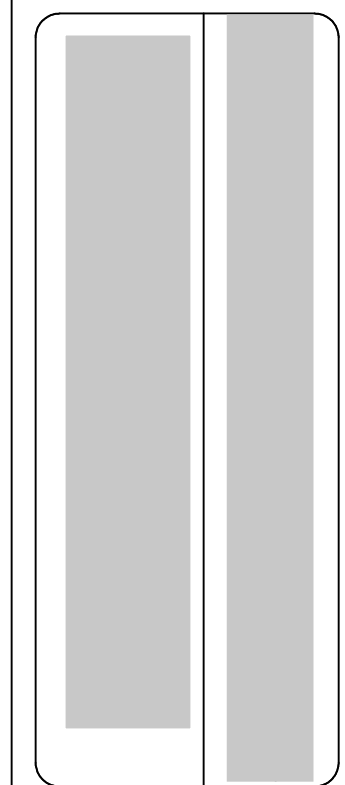
UNIFIEDSTUDIOARCHITECT.COM

ARCHITECT SEAL:

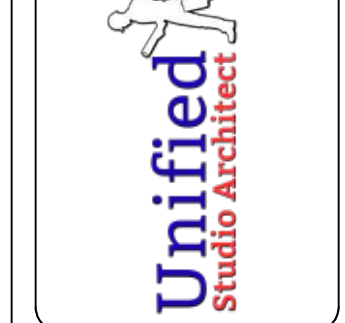


LIFE SAFETY PLAN

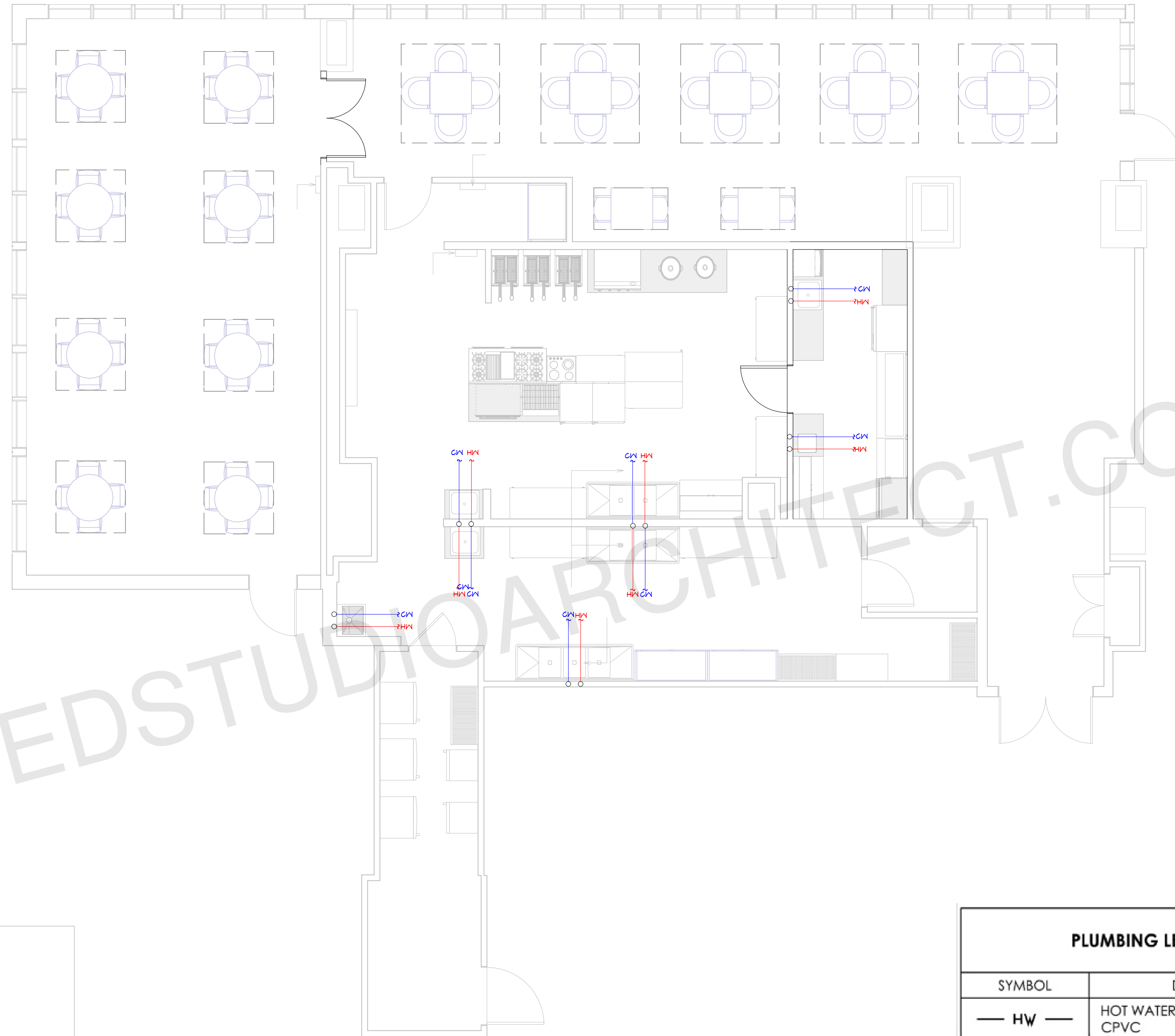
SCALE @ 24" X 36"
 DATE: 10-16-2024
 DRAWN BY: AK



8735 Dunwoody Place
 #6694, Atlanta, GA 30350
 unifiedstudioarchitect.com
 Ph: 302 889 1886



SHEET NUMBER
A09



PIPE SIZES:

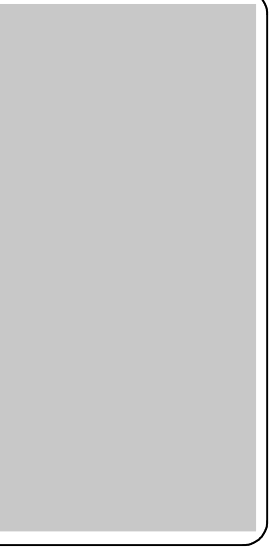
Cold Water Pipe Line	= 3/4"
Hot Water Pipe Line	= 1/2"
Sewer Pipe	= 2.5"
Main sewer Pipe	= 3"
Vent	= 2"

DOMESTIC PIPELINE PLAN
1/4"=1'

PLUMBING LEGEND	
SYMBOL	DESCRIPTION
— HW —	HOT WATER, COPPER TYPE L, OR CPVC
— W —	COLD WATER, COPPER TYPE L, OR PVC
— SS —	WASTE, PVC, SCHEDULE 40 (DWV)
— — —	VENT, (DWV)

NOTE: CONTRACTOR TO INSPECT EXISTING PLUMBING TO VERIFY CONDITIONS IN FIELD AND MODIFY AS REQUIRED TO CONNECT NEW FIXTURES.

ARCHITECT SEAL:

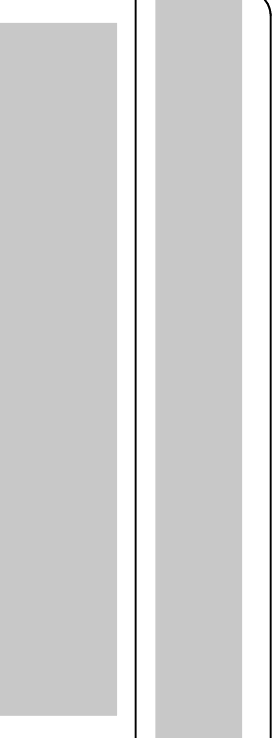


PLUMBING PLAN

SCALE @ 24" X 36"

DATE: 10-16-2024

DRAWN BY: AK

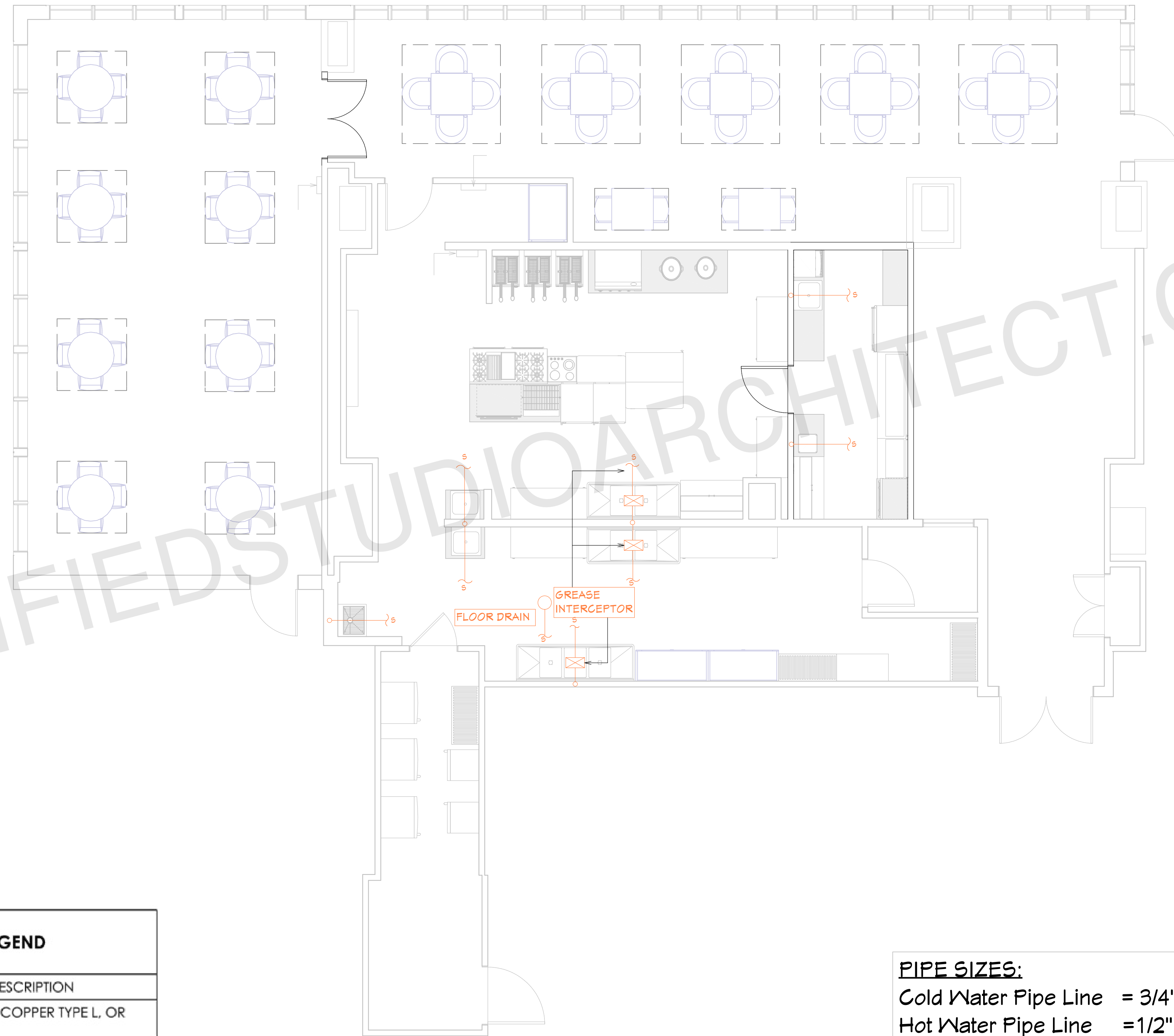


8735 Dunwoody Place
#6694, Atlanta, GA 30350
unifiedstudioarchitect.com
Ph: 302 889 1886

SHEET NUMBER

A10

PLUMBING LEGEND	
SYMBOL	DESCRIPTION
— HW —	HOT WATER, COPPER TYPE L, OR CPVC
— W —	COLD WATER, COPPER TYPE L, OR PVC
— SS —	WASTE, PVC, SCHEDULE 40 (DWV)
— — —	VENT, (DWV)



SEWER PLAN
1/4"=1'

PIPE SIZES:
 Cold Water Pipe Line = 3/4"
 Hot Water Pipe Line = 1/2"
 Sewer Pipe = 2.5"
 Main sewer Pipe = 3"
 Vent = 2"

UNIFIEDSTUDIOARCHITECT.COM

ARCHITECT SEAL:

SEWER PLAN

SCALE @ 24" X 36"

DATE: 10-16-2024

DRAWN BY: AK

8735 Dunwoody Place
 #6694, Atlanta, GA 30350
 unifiedstudioarchitect.com
 Ph: 302 889 1886

SHEET NUMBER

E02